

ই  
এ  
ই  
এ  
ই

2022

*Heller: Authentic Accessible Design*

## Frank Gehry

The most celebrated architect working today. Frank Gehry has single-handedly changed conventional ideas about architecture. Recent masterpieces include the Guggenheim museum in Bilbao and the Disney Concert Hall in Los Angeles. Gehry's unique vision and innovative use of materials has brought him numerous honors including the 1989 Pritzker Prize, the 1998 National Medal of Arts Award, and the 2000 American Institute of Architects Gold Medal. Through his emphasis on collaboration in the creative process, Gehry continues to transcend the boundaries of design. The Frank Gehry Furniture Collection is in the permanent design collection of the Pinakothek der Moderne, Munich and exhibited in The Cooper Hewitt Museum, New York.

*"This is the beginning of an exploration..."*



*Disney Concert Hall, Los Angeles*



## The Frank Gehry Furniture Collection

*Design: Frank O. Gehry, 2004*

The most innovative furniture, created by the world's most celebrated architect. A group of three cubes, a bench, easy chair, coffee table/sitting unit, and sofa, in silver/grey. Beautiful and functional, this furniture creates a stunning group indoors and outdoors.



**The Frank Gehry Furniture Collection**

*Design: Frank O. Gehry, 2004*



## Gehry Color Cubes

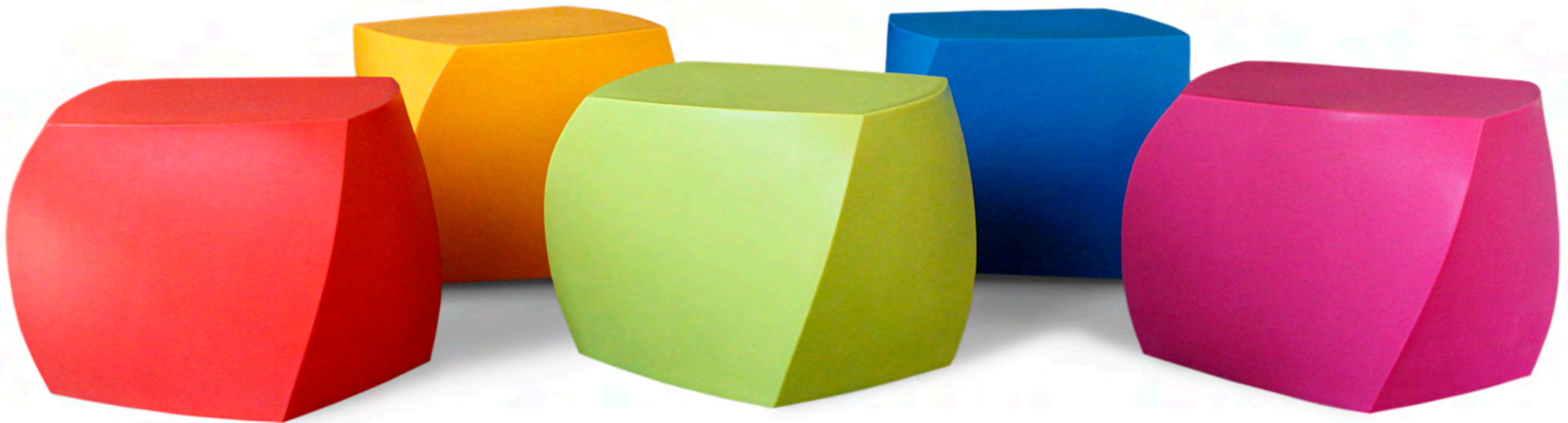
*Design: Frank O. Gehry, 2010*

In 2006, one of the world's most celebrated architects, Frank Gehry, created a giant flower sculpture, "Le Telephone," for the French artist Sophie Calle to use in an imaginative art happening on the Pont de Gagliano in Paris. Today, inspired by the colors of that sculpture, Heller is producing The Gerhy Color Cubes. Based on the original silver cubes of our Frank Gehry Furniture Collection, the new colors include magenta, yellow, red, blue, green, black and white brilliantly enhance the cubes' extraordinary sculptural facets.



*Sophie Calle sculpture on the Pont de Gagliano in Paris*

The cubes, perfect for indoors or outdoors, will add a jolt of color or an entire rainbow to any public or private space.



The Frank Gehry Bouquet  
Design: Frank O. Gehry, 2010





## Lella and Massimo Vignelli

Among the most influential designers of the twentieth century, Lella and Massimo Vignelli have brought clarity, coherence, and timelessness to innumerable projects: from corporate identity for Knoll, Cinzano, Xerox, and Rai television; to packaging for Perugina, Fratelli Rosetti, Heller and IBM; to publications, interior design, and product design. Among numerous other honors, Massimo Vignelli has won two Compasso d'Oro's. Born in Italy, the Vignellis work in the USA. Their work is represented in museums worldwide.

*"Design is one."*



## The Vignelli Chair 2006



## The Vignelli Chair

*Design: Lella and Massimo Vignelli, 2006*

A new classic. Its gentle curves and moulded body offer the timeless elegance, simplicity and functionality for which the Vignellis are legendary. Made of UV- and weather-resistant resin. Perfect for indoor and outdoor use, for restaurants, offices and dining rooms.



## **The Vignelli Collection**

*Design: Lella and Massimo Vignelli, 2005*

Lella and Massimo needed casual furniture for their new home in Sorrento. They designed a multi-purpose indoor-outdoor grouping ideal for home, hospitality and office environments. Cube, bench and low table.



## Studio 65

Founded in 1965 by Franco Audrito and a team of young designers, Studio 65 created cult objects such as the *Bocca* sofa and the *Capitello* chair. Today, with offices in Torino, Jeddah, Cairo, and Bali, the firm has created landmark buildings throughout the world.

*"I've always appreciated courage, enthusiasm, and fantasy."*



## Kiss

*Design: Studio 65, 2004*

This sweet one-seater is made of resin for use indoors and out.



**Bocca**

*Design: Studio 65, reissue 2004*

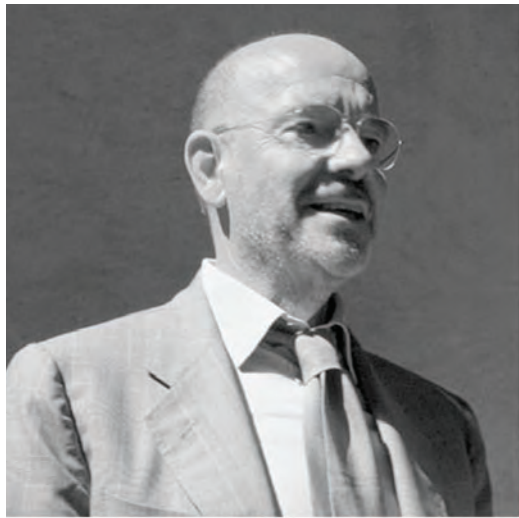
The famous lipstick-red sofa adds a smile to any environment. This new version, a loveseat for two, is made of resin for comfort and use indoors and out. Color: red, of course.



## Mario Bellini

Since the '60s, the versatile Mario Bellini has been celebrated for his pioneering industrial designs for companies such as Olivetti, Cassina, Artemide, B&B Italia, Heller, Renault, Rosenthal, Vitra, and Yamaha. Mario Bellini has won several Compasso d'Oro awards. Twenty-five of Bellini's elegant designs are in the permanent Collection of the Museum of Modern Art in New York, which honored him with a one-man show in 1987. His best-known architecture includes the new fair district of the Milan Trade Fair, the Essen Trade Fair, the Tokyo Design Center, and an extension to the National Gallery of Victoria in Melbourne.

*"The challenge of combining new technology with design was fascinating."*



## The Bellini Chair, 1998

The Bellini Chair has become a modern classic. In 2001 it received the Compasso d'Oro ADI, Italy's most prestigious design award. The Bellini Chair is in the design collection of museums around the world. It is the perfect chair for nearly every purpose.









**The UltraBellini**  
*Design: Mario Bellini, 2006*

The evolution of the Compasso d'Oro award winning Bellini is the UltraBellini. With a high gloss finish and produced in nylon, the UltraBellini is an extraordinary and elegant stacking chair.



*The America's Cup Building, Valencia*



## The Tavollini

*Design: Mario Bellini, 1999*

Stacking stool for all around the home:  
bedside stool, bathroom, kitchen, dining  
stool. Indoors and outdoors.



**Arco**

*Design: Mario and Claudio Bellini, 2005*

Stacking chair appropriate for indoor/outdoor commercial, institutional and residential use.



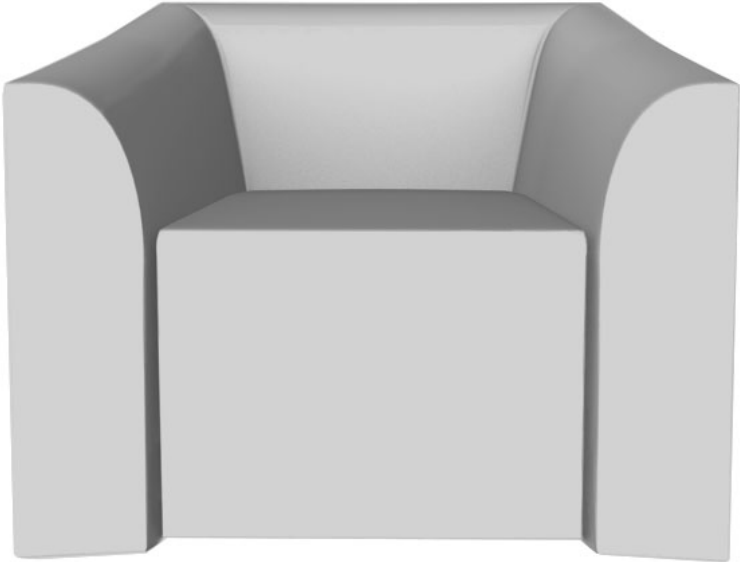
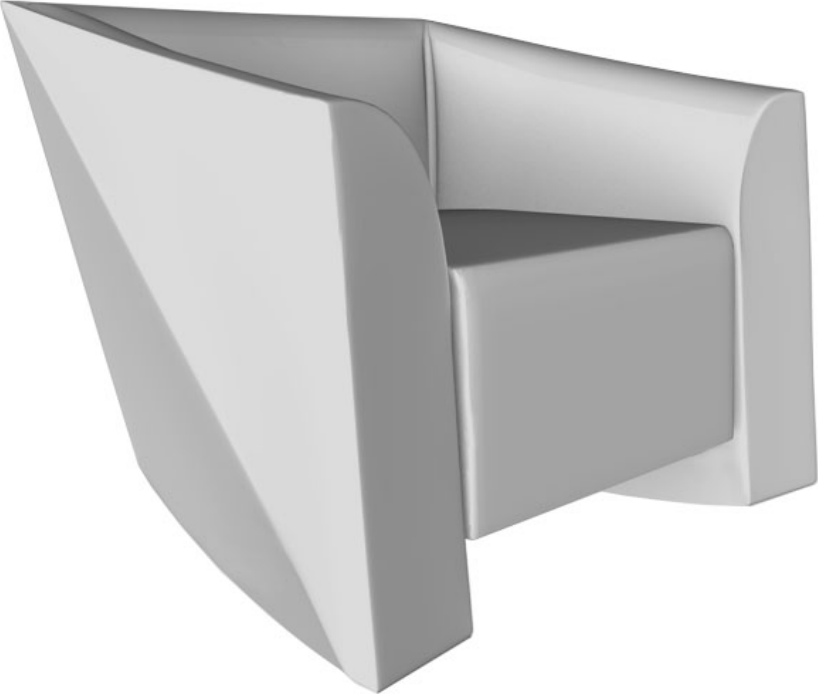
## **MB 1, MB 5**

*Design: Mario Bellini, 2003*

Another classic Bellini. Another technological innovation. Made of self-cushioning polymer. The MB 1 was awarded in 2004 both the IF Design and the Red Dot prizes. The MB group includes an armchair, sofa, and pouf/table. For office, home and hospitality. Indoor and outdoor. Exceedingly comfortable.



**MB Rocker, MB Swivel**  
2016





## The Frank Gehry Furniture Collection

### Right Twist Cube

Design: Frank Gehry

#### Model 1015

Twist cube appropriate for indoor/outdoor commercial, institutional and residential use.

#### Construction

One piece roto molded polymer.

#### Dimensions

Height: 43,5 cm – 17 1/8”  
Width: 46 cm – 18 1/8”  
Depth: 50 cm – 19 11/16”  
Weight: 7,2 kg – 15.87 lbs

#### Colors

1015-28 Silver Grey  
1015-01 White  
1015-02 Black

### Left Twist Cube

Design: Frank Gehry

#### Model 1015

Twist cube appropriate for indoor/outdoor commercial, institutional and residential use.

#### Construction

One piece roto molded polymer.

#### Dimensions

Length: 43.5 cm – 17 1/8”  
Width: 46 cm – 18 1/8”  
Depth: 45,5 cm – 17 15/16”  
Weight: 7,2 kg – 15.87 lbs

#### Colors

● 1016-28 Silver Grey  
○ 1016-01 White  
● 1016-02 Yellow  
● 1016-03 Red  
● 1016-04 Magenta  
● 1016-05 Blue  
● 1016-06 Black  
● 1016-07 Green

### Three Sided Cube

Design: Frank Gehry

#### Model 1017

Twist cube appropriate for indoor/outdoor commercial, institutional and residential use.

#### Construction

One piece roto molded polymer.

#### Dimensions

Height: 42,5 cm – 16 3/4”  
Width: 58 cm – 22 13/16”  
Depth: 57 cm – 22 7/16”  
Weight: 6,4 kg – 14.11 lbs

#### Colors

1017-28 Silver Grey  
1017-01 White  
1017-02 Black

### Bench

Design: Frank Gehry

#### Model 1018

Bench appropriate for indoor/outdoor commercial, institutional and residential use.

#### Construction

One piece roto molded polymer.

#### Dimensions

Height: 42,5 cm – 16 3/4”  
Width: 127 cm – 50”  
Depth: 50 cm – 19 11/16”  
Weight: 13,6 kg – 29.98 lbs

#### Colors

● 1018-28 Silver Grey  
○ 1018-01 White  
● 1018-02 Yellow  
● 1018-03 Red  
● 1018-04 Magenta  
● 1018-05 Blue  
● 1018-06 Black  
● 1018-07 Green

### Coffee Table / Sitting Unit

Design: Frank Gehry

#### Model 1019

Coffee Table / Sitting Unit appropriate for indoor/outdoor commercial, institutional and residential use.

#### Construction

One piece roto molded polymer.

#### Dimensions

Height: 40 cm – 15 3/4”  
Width: 122 cm – 48 1/16”  
Depth: 122 cm – 48 1/16”  
Weight: 23,8 kg – 52.47 lbs

#### Colors

● 1019-28 Silver Grey  
○ 1019-01 White  
● 1019-02 Yellow  
● 1019-03 Red  
● 1019-04 Magenta  
● 1019-05 Blue  
● 1019-06 Black  
● 1019-07 Green

### Easy Chair

Design: Frank Gehry

#### Model 1020

Easy chair appropriate for indoor/outdoor commercial, institutional and residential use.

#### Construction

One piece roto molded polymer.

#### Dimensions

Height: 68,5 cm – 26 15/16”  
Seat Height: 39 cm – 15 3/8”  
Width: 99 cm – 39”  
Depth: 86 cm – 33 7/8”  
Weight: 20,8 kg – 45.86 lbs

#### Colors

● 1020-28 Silver Grey  
○ 1020-01 White  
● 1020-02 Yellow  
● 1020-03 Red  
● 1020-04 Magenta  
● 1020-05 Blue  
● 1020-06 Black  
● 1020-07 Green

### Sofa

Design: Frank Gehry

#### Model 1021

Sofa appropriate for indoor/outdoor commercial, institutional and residential use.

#### Construction

One piece roto molded polymer.

#### Dimensions

Height: 76 cm – 29 15/16”  
Seat Height: 44,5 cm – 17 1/2”  
Width: 183 cm – 72 1/16”  
Depth: 100 cm – 39 3/8”  
Weight: 38,8 kg – 85.54 lbs

#### Colors

● 1021-28 Silver Grey  
○ 1021-01 White  
● 1021-02 Yellow  
● 1021-03 Red  
● 1021-04 Magenta  
● 1021-05 Blue  
● 1021-06 Black  
● 1021-07 Green

## The Vignelli Chair

Design: Lella and Massimo Vignelli

### Model 1014

Injection molded chair appropriate for indoor/outdoor commercial, institutional and residential use.

### Construction

Injection molded nylon polymer.

### Dimensions

Height: 90 cm – 35 7/16”  
Seat Height: 44 cm – 17 5/16”  
Width: 78 cm – 30 11/16”  
Depth: 56,5 cm – 22 1/4”  
Weight: 8,8 kg – 19.4 lbs

### Colors

1014-06 Black  
1014-17 Warm Grey  
1014-34 Red/Orange

## The Vignelli Collection

### Vignelli Cube

Design: Lella and Massimo Vignelli

### Model 1030

Cube appropriate for indoor/outdoor commercial, institutional and residential use.

### Construction

One piece roto molded polymer.

### Dimensions

Height: 46 cm – 18 1/8”  
Width: 46 cm – 18 1/8”  
Depth: 46 cm – 18 1/8”  
Weight: 6,8 kg – 15 lbs

### Colors

1030-01 White  
 1030-12 Dark Grey  
 1030-17 Light Grey  
 1030-00 Purple  
 1030-00 Red  
 1030-00 Pink  
 1030-00 Yellow  
 1030-00 Blue  
 1030-00 Green

### Vignelli Big Bench

Design: Lella and Massimo Vignelli

### Model 1031

Bench appropriate for indoor/outdoor commercial, institutional and residential use.

### Construction

One piece roto molded polymer.

### Dimensions

Height: 46 cm – 18 1/8”  
Width: 182 cm – 71 5/8”  
Depth: 46 cm – 18 1/8”  
Weight: 18,14 kg – 40 lbs

### Colors

1031-01 White  
 1031-12 Dark Grey  
 1031-17 Light Grey  
 1031-00 Purple  
 1031-00 Red  
 1031-00 Pink  
 1031-00 Yellow  
 1031-00 Blue  
 1031-00 Green

## Vignelli Low Table

Design: Lella and Massimo Vignelli

### Model 1032

Low table appropriate for indoor/outdoor commercial, institutional and residential use.

### Construction

One piece roto molded polymer.

### Dimensions

Height: 46 cm – 18 1/8”  
Width: 120 cm – 47 1/4”  
Depth: 120 cm – 47 1/4”

### Colors

1032-01 White  
 1032-12 Dark Grey  
 1032-17 Light Grey  
 1032-00 Purple  
 1032-00 Red  
 1032-00 Pink  
 1032-00 Yellow  
 1032-00 Blue  
 1032-00 Green



### **Kiss**

*Design: Studio 65*

#### **Model 1013**

Sofa appropriate for indoor/outdoor institutional and residential use.

#### **Construction**

One piece roto molded polymer.

#### **Dimensions**

Height: 84 cm – 33 1/16”

Seat Height: 38 cm – 14 15/16”

Width: 85 cm – 33 7/16”

Depth: 76 cm – 29 15/16”

Weight: 21,6 kg – 47.62 lbs

#### **Colors**

1013-32 Red

### **Bocca**

*Design: Studio 65*

#### **Model 1011**

Sofa appropriate for indoor/outdoor institutional and residential use.

#### **Construction**

One piece roto molded polymer.

#### **Dimensions**

Height: 84 cm – 33 1/16”

Seat Height: 38 cm – 14 15/16”

Width: 210 cm – 82 11/16”

Depth: 76 cm – 29 15/16”

Weight: 30 kg – 66.14 lbs

#### **Colors**

1011-32 Red

### **The Bellini Chair**

*Design: Mario Bellini*

#### **Model 1000**

Injection molded stacking chair appropriate for indoor/outdoor commercial, institutional and residential use.

#### **Construction**

One piece modified, fiberglass reinforced polypropylene.

#### **Dimensions**

Height: 84 cm – 33 1/16”

Seat Height: 46 cm – 18 1/8”

Width: 44 cm – 17 5/16”

Depth: 46 cm – 18 1/8”

Weight: 3,4 kg – 7.5 lbs

#### **Colors**

○ 1000-01 White

● 1000-06 Black

● 1000-12 Dark Grey

● 1000-17 Light Grey

● 1000-31 Red Red

● 1000-70 Blue Blue

### **Tavollini**

*Design: Mario Bellini*

#### **Model 1003**

Stacking side stool appropriate for indoor/outdoor commercial, institutional and residential use.

#### **Construction**

One piece high gloss nylon.

#### **Dimensions**

Height: 46,5 cm – 18 5/16”

Diameter: 46 cm – 18 1/8”

#### **Colors**

1003-01 White

Pack: 6/carton per color

### **Arco**

*Design: Mario and Claudio Bellini*

#### **Model 1004**

Stacking chair appropriate for indoor/outdoor commercial, institutional and residential use.

#### **Construction**

One piece transparent polycarbonate or nylon polymer.

#### **Dimensions**

Height: 85,1 cm – 33 1/2”

Seat Height: 45,7 cm – 18”

Width: 63,5 cm – 25”

Depth: 54,6 cm – 21 1/2”

Weight: 4,2 kg – 9.26 lbs (nylon)

Weight: 4,8 kg – 10.58 lbs (polycarbonate)

#### **Colors**

1004-60 Transparent

Pack: 4/carton per color

**MB 1**

*Design: Mario Bellini*

**Model 1008**

Armchair appropriate for indoor/outdoor commercial and residential use.

**Construction**

One piece roto molded polymer.

**Dimensions**

Height: 65 cm – 25 9/16"

Seat Height: 38 cm – 14 15/16"

Width: 80 cm – 31 1/2"

Depth: 78 cm – 30 11/16"

Weight: 18,4 kg – 40.57 lbs

**Colors**

1008-01 White

1008-06 Black

1008-17 Light Grey

Pack: 1/carton per color

**MB Rocker**

*Design: Mario Bellini*

**Model 1008R**

Rocking armchair appropriate for indoor/outdoor commercial and residential use.

**Construction**

One piece roto molded polymer.

**Dimensions**

Height: 65 cm – 25 9/16"

Seat Height: 38 cm – 14 15/16"

Width: 80 cm – 31 1/2"

Depth: 78 cm – 30 11/16"

Weight: 18,4 kg – 40.57 lbs

**Colors**

1008R-01 White

1008R-06 Black

1008R-17 Light Grey

Pack: 1/carton per color

**MB Swivel**

*Design: Mario Bellini*

**Model 1008S**

Swivel armchair appropriate for indoor/outdoor commercial and residential use.

**Construction**

One piece roto molded polymer.

**Dimensions**

Height: 65 cm – 25 9/16"

Seat Height: 38 cm – 14 15/16"

Width: 80 cm – 31 1/2"

Depth: 78 cm – 30 11/16"

Weight: 18,4 kg – 40.57 lbs

**Colors**

1008S-01 White

1008S-06 Black

1008S-17 Light Grey

Pack: 1/carton per color

**MB 2**

*Design: Mario Bellini*

**Model 1010**

Sofa appropriate for indoor/outdoor commercial and residential use.

**Construction**

One piece roto molded polymer.

**Dimensions**

Height: 65 cm – 25 9/16"

Seat Height: 38 cm – 14 15/16"

Width: 151 cm – 59 7/16"

Depth: 78 cm – 30 11/16"

Weight: 29,8 kg – 65.7 lbs

**Colors**

1010-01 White

1010-06 Black

1010-17 Light Grey

Pack: 1/carton per color

**MB 5**

*Design: Mario Bellini*

**Model 1009**

Pouf/table appropriate for indoor/outdoor commercial and residential use.

**Construction**

One piece roto molded polymer.

**Dimensions**

Height: 36 cm – 14 3/16"

Width: 56 cm – 22 1/16"

Depth: 56 cm – 22 1/16"

Weight: 7,4 kg – 16.31 lbs

**Colors**

1009-01 White

1009-06 Black

1009-17 Light Grey

Pack: 1/carton per color